

## 公司简介

### COMPANY PROFILE

宁波壹益网络科技集团有限公司, 作为浙江世腾科技集团有限公司海外事业中心, 总部位于浙江宁波, 是一家数字化供应链服务商。世腾科技集团成立于2009年, 主要从事智慧交通安防, 景观照明, 园林环卫, 市政管网, 泵阀管件, 工厂仓储, 冷暖通风, 人造草坪, 悬浮地板和工程机械等产品和设施的研发、设计、生产、销售、施工和运维, 提供一站式的解决方案和服务。

目前合作上游生产型企业5000余家, 累计服务企业客户近20万家。拥有15家供应链公司, 80多家销售分子公司和产品公司, 1000多人的服务团队, 数字化管理水平和本地化综合服务能力处于行业领先地位。

Ningbo Yiyi Network Technology Group Co., Ltd., as the overseas service center of Zhejiang Shiteng Technology Group Co., Ltd., is a digital supply chain service supplier, founded in 2009 and headquartered in Ningbo.

Shiteng group is mainly engaged in the research and development, design, production, sales, construction and operation and maintenance of intelligent traffic security, landscape lighting, garden sanitation, municipal pipeline network, pumps, valves and fittings, factory warehousing, heating, cooling and ventilation, artificial turf, suspended flooring, and construction machinery, providing one-stop solutions and services.

Currently, we cooperate with more than 5,000 manufacturing enterprises and serve nearly 200,000 enterprise customers. With 15 supply chain companies, over 80 sales subsidiaries and product companies, more than 1,000 people in the service team, our digital management capabilities and comprehensive service capabilities are at the forefront of the industry.

宁波壹益网络科技集团有限公司

Ningbo Yiyi Network Technology Group Co., Ltd.



[www.yiyiindustrial.com](http://www.yiyiindustrial.com)



[industrial@nbstkg.com](mailto:industrial@nbstkg.com)



浙江省宁波市鄞州区启明路818号10幢77号

No.77 of Building 10, No.818 Qiming Road, Yinzhou District, Ningbo 315000, Zhejiang, China

## ■ 道路交通设施 Road Traffic

- 01 波形护栏 Wave Guardrail
- 01 市政护栏 City Road Guardrail
- 02 草坪护栏 Lawn Guardrail
- 02 桥梁护栏 Bridge Guardrail
- 02 旋转桶护栏 Revolving Barrel Guardrail
- 03 防撞垫 Crash Pad
- 03 发光路障 Luminous Barrier
- 05 活动护栏 Movable Guardrail
- 05 围挡 Fence
- 05 声屏障 Acoustic Barrier
- 06 道路标牌 Road Traffic Signs
- 06 金属波纹涵管 Metal Bellows
- 06 移动信号灯 Moving Signal Lamp

## ■ 防撞护栏 Crash Barrier

- 07 锌钢围墙护栏 Zinc Steel Fence
- 07 铸铁围墙护栏 Cast Iron Fence
- 07 基坑网 Foundation Pit Net

## ■ 护栏网 Wire Fence

- 08 边坡护栏网 Slope Protection Net
- 08 双边丝护栏网 Double Side Wire Fence
- 08 边框护栏网 Frame Fence
- 09 桃形立柱护栏网 Bilateral Wire Fence
- 09 体育场护栏网 Stadium Fence
- 09 机场监狱护栏网 Airport Prison Fence
- 10 荷兰网 Holland Wire Mesh
- 10 车间隔离网 Workshop Isolation Network
- 10 移动护栏网 Mobile Protective Net

## ■ 通风换气 Ventilation

- 11 工业大风扇 Mobile Industry Fan
- 13 工业冷风机 Mobile Industry Air Cooler

## ■ 仓储周转 Storage Equipment

- 14 轻型货架 Light Duty Rack
- 14 重型货架 Heavy Duty Racking
- 14 工位设备 Workstation Equipment
- 15 物流设备 Logistics Equipment
- 16 自行车停车架 Bicycle Parking Rack

## ■ 智慧照明 Smart Lamp

- 17 太阳能路灯 Solar Energy Lamp Series
- 17 LED投射灯 LED Spotlight
- 18 LED抱树灯 LED Tree Hugger Lights
- 18 LED地埋灯 LED Buried Lights
- 19 LED洗墙灯 LED Wall Washer
- 19 LED轮廓灯 LED Outline Light
- 20 LED水底灯 LED Underwater Light
- 20 LED壁灯 LED Wall Lamp
- 21 LED草坪灯 LED Lawn Lamp
- 21 LED球场灯 LED Court Light

## ■ 礼堂椅 Auditorium Chair

- 22 塑壳 Plastic Backshell
- 22 木板 Wooden
- 22 铝合金 Aluminum Alloy

## ■ 浮筒 Floats

- 23 浮筒 Floats

## ■ 人造草坪 Artificial Lawn

- 24 人造草坪 Artificial Lawn

## ■ 悬浮地板 Drainage Mat

- 25 悬浮地板 Drainage Mat

## ■ 防洪板 Flood control barrier

- 26 防洪板 Flood control barrier

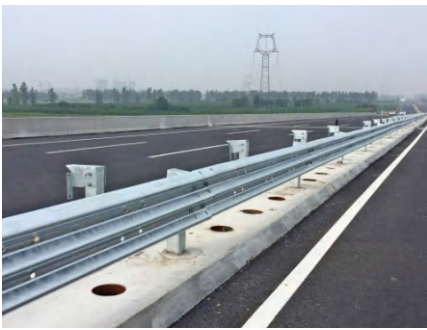
### 双波形护栏 Double Wave Guardrail



【规格】(长\*宽\*波高\*厚度)  
长4320mm, 宽度310mm, 波高85mm,  
板厚:3mm、4mm;  
【材质】Q235

Specification : (Length \* Width \* Wave height \* Thickness)  
Length 4320mm, width 310mm, wave height 85mm,  
plate thickness: 3mm, 4mm.  
Material: Q235

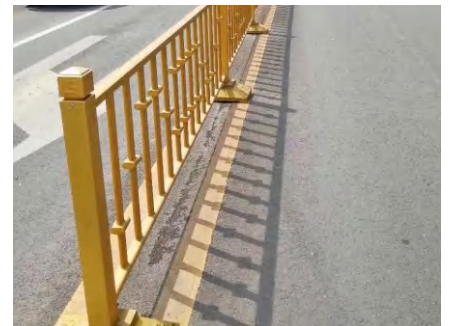
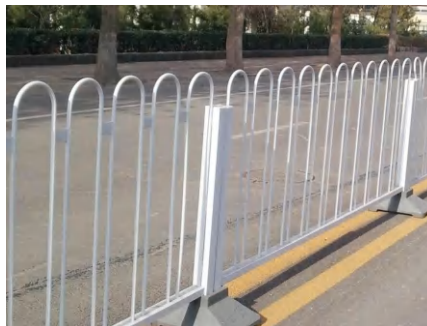
### 三波形护栏 Three Wave Guardrail



【规格】(长\*宽\*波高\*厚度)  
长4320mm, 宽度506mm,  
波高85mm板厚:4mm;  
【材质】Q235

Specification : (length \* width \* wave height \* thickness)  
Length 4320mm, width 506mm, wave height 85mm,  
plate thickness: 4mm  
Material: Q235

### 市政护栏 City Road Guardrail



城市护栏美观新颖, 易安装, 安全可靠, 价格优惠。城市交通要道、高速公路中间绿化隔离带、桥梁、二级公路、乡镇公路及各公路收费口等的隔离。

City guardrail is beautiful and novel, easy to install, safe and reliable, with favorable price. The isolation of city traffic arteries, highway intermediate green isolation zones, bridges, secondary roads, township roads and various highway toll gates.

### 草坪护栏 Lawn Guardrail



PVC草坪护栏、水泥草坪护栏。装饰庭院绿地，园林小径，城市大道之间，洁白亮丽的视觉效果。

PVC lawn guardrail, cement lawn guardrail. Decorate the courtyard green space, garden paths, city avenue, white bright visual effect.

### 桥梁护栏 Bridge Guardrail



桥梁护栏是指设置于桥梁上的护栏。其目的是为了防止失控车辆越出桥外，具有使车辆不能突破、下穿、翻越桥梁以及美化桥梁建筑的功能。

Bridge guardrail refers to the guardrail set on the bridge. Its purpose is to prevent out-of-control vehicles out of the bridge rail, so that vehicles can not break through, under the bridge, over the bridge as well as beautify the function of the bridge building.

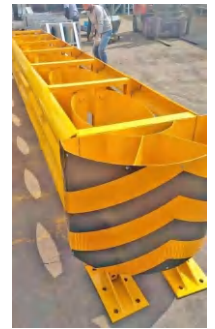
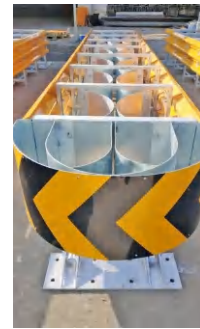
### 旋转桶护栏 Revolving Barrel Guardrail



旋转式防撞护栏对失控车辆的防护的安全性能，在保证防撞性能前提下，旋转式防撞护栏的导向性能、缓冲性能相对传统护栏产品均具有明显优势。

Under the premise of ensuring the anti-collision performance, the guiding performance and buffering performance of the rotating guardrail have obvious advantages over the traditional guardrail products.

## 防撞垫 Crash Pad



车辆冲撞防撞垫后,车辆的动量依次传递给防撞筒,使车辆和防撞筒的速度依次降低,然后使车辆的速度降到15km/h以下。

After the vehicle crashes into the anti-collision pad, the momentum of the vehicle is successively transmitted to the anti-collision cylinder, so that the speed of the vehicle and the anti-collision cylinder is successively reduced, and then the speed of the vehicle is reduced to less than 15km/h.

## 发光路障 Luminous barrier



### 光能安全柱 Photoenergy safety column

外形尺寸:带灯款:114mm\*860mm  
无灯款:114mm\*790mm  
产品材质:冷轧钢板+天然橡胶  
颜色分类:黑黄、黄白、绿白三款可选  
柱灯类型:常亮、频闪

Size:With light option:114mm\*860mm  
Without light option:114mm\*790mm  
Product material: Cold-rolled steel plate + natural rubber  
Color options: black-yellow, yellow-white, and green-white available  
Column light types: steady light, strobe light

发光路障 Luminous Barrier



LB-802-1



LB-802-2



LB-802-3

发光障碍球

可选规格尺寸

圆直径:500mm

圆直径:400mm

重量:大概160KG

重量:大概90KG

智能发光障碍球 LB-802

底座处可定制公司名称及LOGO



LB-802-4



LB-802-5



LB-802-6

LED Stone Ball

Optional specifications and sizes

Circle diameter: 500mm

Circle diameter: 400mm

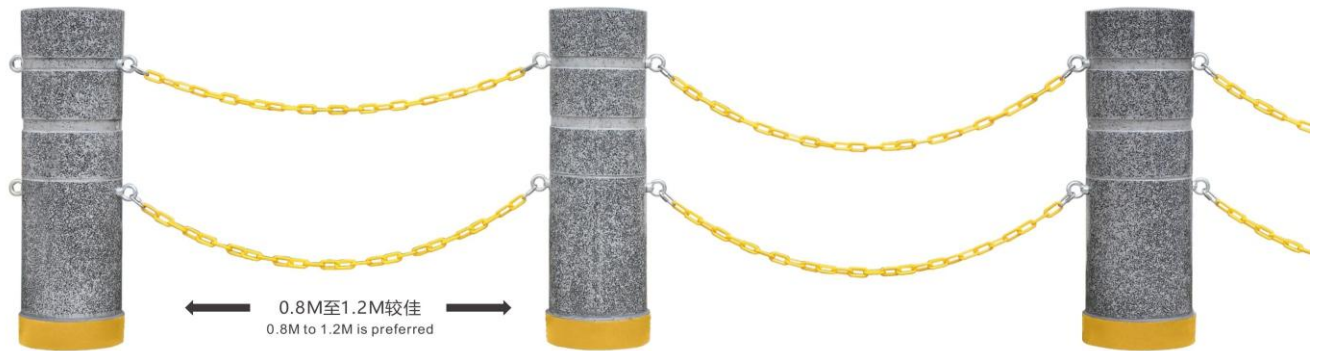
Weight: approximately 160KG

Weight: approximately 90KG

LB-802 Illuminated anti-collision pillar

Customizable company name and logo at the base

发光路障 Luminous Barrier



智能发光防撞柱

圆直径230mm

重量:大概65KG

重量:大概35KG

圆直径170mm

可选规格尺寸

LB-601 illuminated anti-collision pillar

Circle diameter :230mm

Weight:approximately 65KG

Weight:approximately 35KG

Circle diameter :170mm

Optional specifications and sizes

### 活动护栏 Movable Guardrail



设置在中央分隔带开口处, 为方便特种车辆(如交通事故处理车辆、急救车辆)在紧急情况下通行和一侧道路施工封闭时临时开启放行的活动设施。

Is set in the central median opening, for the convenience of special vehicles (such as traffic accident vehicles, emergency vehicles) in an emergency to pass and one side of the road construction closed when the temporary opening of the release of the activities of the facility.

### 围挡 Fence



围挡是一种为了将建设施工现场与外部环境隔离开来, 使施工现场成为一个相对封闭隔离空间的设施。

The enclosure is a kind of facility that isolates the construction site from the external environment and makes the construction site a relatively closed and isolated space.

### 声屏障 Acoustic Barrier



在高架公路或立交桥上设置隔音屏障, 此时由于利用了高速公路和立交桥本身的高度来提高隔音屏障的有效高度, 可以增大声隔音屏障的阴影区域。

When sound barriers are set up on an elevated highway or overpass, the shadow area of the sound barrier can be increased due to the use of the height of the highway and the overpass itself to improve the effective height of the sound barrier.



### 金属波纹涵管 Metal Bellows



指铺埋在公路, 铁路下面的涵洞用螺纹波纹管, 它是由波形金属板卷制成或用半圆波形钢片拼制成的圆形波纹管, 广泛应用于公路, 铁路, 小桥, 通道, 挡土墙以及各种矿场, 巷道挡墙支护等工地。

Refers to lay buried in the highway, railroad below the culvert with threaded corrugated pipe, it is made of corrugated metal plate rolled or made of semicircular corrugated steel sheet assembled into a circular corrugated pipe, is widely used in highways, railroads, small bridges, passages, retaining walls and a variety of mines, tunnel retaining wall support and other construction sites.

### 移动信号灯 Moving Signal Lamp



太阳能红圆、黄圆、绿圆同屏显示红箭、黄箭、绿箭同屏显示移动灯。

Solar red circle, yellow circle, green circle on the same screen display red arrows, yellow arrows, green arrows on the same screen display moving lights.



## 防撞护栏 Crash Barrier

### 锌钢围墙护栏 Zinc Steel Fence



采用锌合金材料制作的,具有高强度、高硬度、外观美观、色泽鲜艳等优点。

Made of zinc alloy material, it has the advantages of high strength, high hardness, beautiful appearance, bright color and so on.

### 铸铁围墙护栏 Cast Iron Fence



- 1.以铸铁为材,可做各种花型;
- 2.造型独到,产品质量高价格低廉;
- 3.使用率极高,容易受潮,需要注意防潮等。

1. Cast iron as a material.
2. Unique modeling, product quality and low price, cost-effective.
3. High usage rate, easy to moisture, need to pay attention to moisture.

### 基坑网 Foundation Pit Net

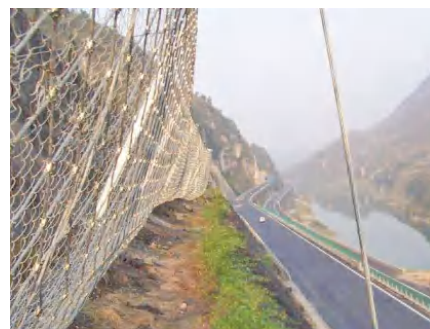


主要采用电焊连接而成,可应用于基坑临边等各种工程施工临时防护。

Mainly made of welded connections, can be used in the pit edge and other various engineering construction temporary protection.

## 护栏网 Wire Fence

### 边坡护栏网 Slope Protection Net



限制坡面岩石土体的风化剥落或破坏以及危岩崩塌(加固作用),或将落石控制于一定范围内运动(围护作用),保护行人和车辆安全通过。

In order to limit the slope rock and soil weathering spalling or damage and collapse of dangerous rocks (reinforcement), or to control the falling rocks in a certain range of movement (enclosure), to protect the pedestrians and vehicles through the safety.

### 双边丝护栏网 Double Side Wire Fence



双边丝护栏网结构简单、用料少、加工费低、便于远程运输,因而工程造价低。

Bilateral wire fence mesh has simple structure, less material, low processing cost, easy to transport remotely, so the project cost is low.

### 边框护栏网 Frame Fence



可以制作成永久性网墙,又可以作为临时隔离网使用,只需采用不同的立柱固定方式便可实现。

It can be made into a permanent wall, but also can be used as a temporary isolation netting, only need to use different post fixing method can be realized.

## 护栏网 Wire Fence

### 桃形立柱护栏网 Bilateral Wire Fence



网片孔径:3.5~8mm  
网孔:7.5\*15cm  
网片高度:1.8m~2.5m  
长度:3m  
立柱尺寸:常用5cm\*7cm、7cm\*10cm  
厚度:1mm



Mesh Diameter :3.5~8mm  
Mesh :7.5\*15cm  
Mesh Height: 1.8m~2.5m  
Length :3m,  
Post Size: Commonly Used 5cm\*7cm, 7cm\*10cm  
Thickness: 1mm



### 体育场护栏网 Stadium Fence



产品最大特点是灵活性强,可根据要求随时调整网片的结构,造型和尺寸。



The most important feature of the product is the flexibility of strong, according to the requirements of the structure of the mesh can be adjusted at any time, modeling and size.



### 机场监狱护栏网 Airport Prison Fence



是由V型支架立柱加强型焊接片网,安全防盗连接件和热镀锌刀片刺笼组成,强度和安全性级别很高。现被广泛应用在监狱、军事基地等高安全场所。

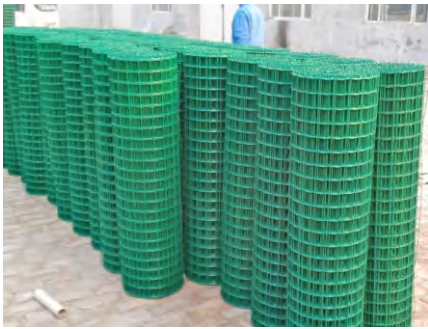


It is composed of V-shaped support column reinforced welded sheet net, security anti-theft connector and hot-dip galvanized blade barbed cage, with high strength and safety defensive level. It is now widely used in high-security places such as prisons and military bases.



## 护栏网 Wire Fence

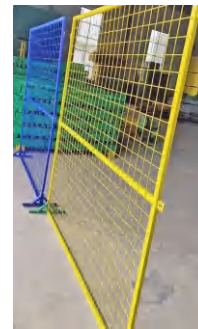
### 荷兰网 Holland Wire Mesh



一片荷兰网宜采用同一类型的钢筋焊成。焊接网按形状、规格分为定型和定制两种。

A piece of Dutch mesh should be welded by the same type of steel bar. Welded wire mesh is divided into two types according to the shape and specification: fixed type and customized type.

### 车间隔离网 Workshop Isolation Network



隔离网又称护栏网、围栏，仓库车间隔离网也叫网片隔断；

Isolation mesh is also known as fence mesh, fence, warehouse workshop isolation mesh is also called mesh partition;

### 移动护栏网 Mobile Protective Net



移动护栏又称为临时护栏移动护栏、移动栅栏  
1.网片焊接型移动护栏2.钢管焊接型移动护栏

Mobile fence also known as temporary fence mobile fence . Mobile Fence  
1.Mesh Welded Mobile Fence 2.Steel Pipe Welded Mobile Fence

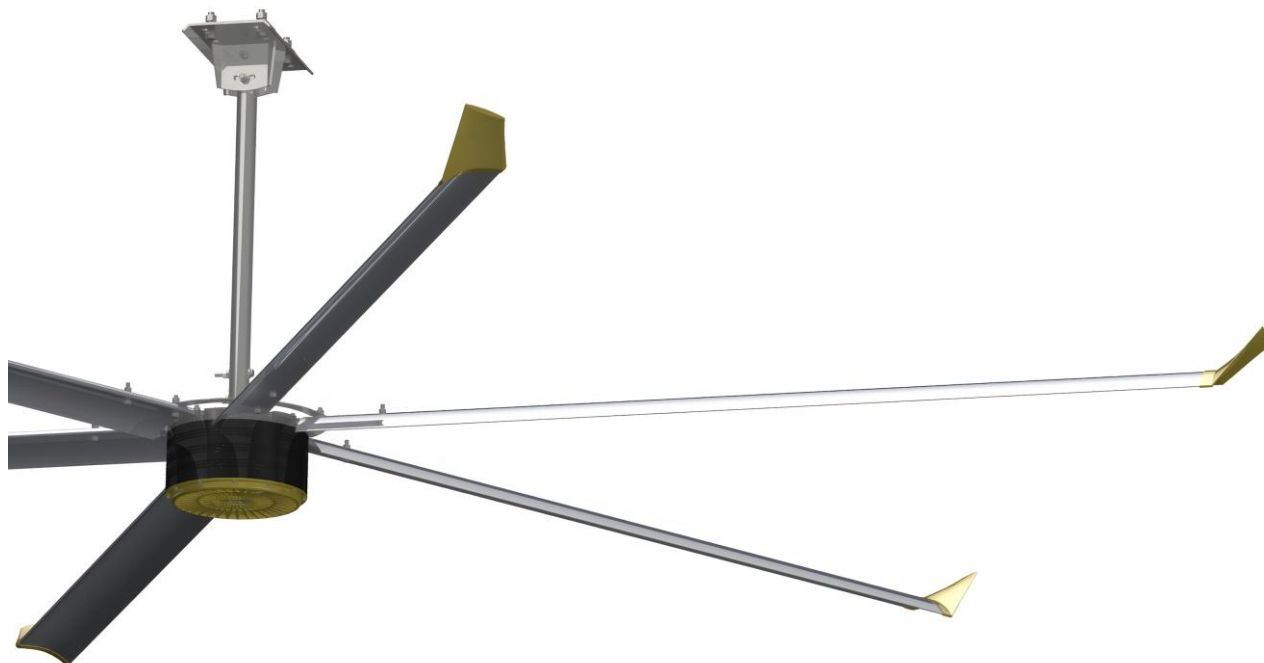
风扬系列,作为较早机型的HVLS风扇,产品畅销十余年,搭载德国品牌减速电机,扭力大。整机安全防护、配件符合工业标准,适合各种严酷工业场合。

As an earlier model of HVLS fan, Feng Yang fans have been selling well for over a decade. Which are equipped with a German brand reduction motor with high torque. The overall has safety protection that their accessories comply with industrial standards, so it's suitable for various harsh industrial occasions.



风帆系列吊扇,工业级安全结构,搭载PMSM永磁无刷同步电机,兼具安全、静音、体积小、免维护等特点,是一款优质的工业超大型吊扇。

The Feng Fan fan, equipped with permanent magnet brushless synchronous motor, has the characteristics of safety, silence, small size, and maintenance free, which is a superior industrial large fan.



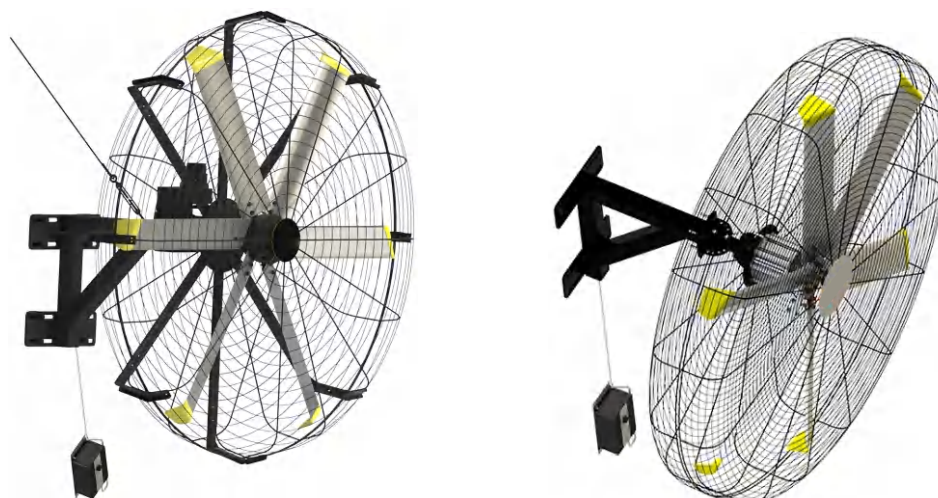
风航系列大风扇,是一款地面移动式手推风扇,超远距离气流输送,覆盖面广,稳固脚轮设计,方便随时移动固定,随取随用。

The Feng Hang fan is a mobile manual fan. Its airflow that it generates can be transported over long distance and has a wide coverage. Designed stable castor, it's convenient to be moved, fastened and used anytime.



风启系列,风量强劲,有效送风距离超过24米。一些工厂或物流仓储车间有狭长通道,平时不利于通风。风启系列能够有效的推动空间内的空气循环,达到降温除潮的目的。

The Feng Qi Fan has a strong air volume and an effective air supply distance of over 24 meters. Some factories have narrow and long passages that are not conducive to ventilation during normal times. It can effectively promote air circulation in the space, achieving the goal of cooling and dehumidifying.



# 通风换气 Ventilation

## 工业冷风机 Mobile industry Air Cooler



KT-16-LM



KT-16-LMT



KT-16-HM



KT-16-HMT

型号	最大风量	适用面积	电源	功率	重量	加水量	耗水量	噪音	外型尺寸
KT-16-LM	5000m <sup>3</sup> /h	30-140m <sup>2</sup>	220V/50Hz	220W	13.9kg	50L	3-4L/H	53/57/61dB	615*420*1020mm
KT-16-LMI	5000m <sup>3</sup> /h	30-140m <sup>2</sup>	220V/50Hz	220W	13.9kg	50L	3-4L/H	53/57/61dB	615*420*1020mm
KT-16-HM	5000m <sup>3</sup> /h	30-140m <sup>2</sup>	220V/50Hz	220W	21kg	55L	3-4L/H	53/57/61dB	680*425*1240mm
KT-16-HMI	5000m <sup>3</sup> /h	30-140m <sup>2</sup>	220V/50Hz	220W	21kg	55L	3-4L/H	53/57/61dB	680*425*1240mm



KT-30



KT-1E-3N



KT-20N



KT-24N

型号	最大风量	适用面积	送风距离	电源	功率	重量	加水量	耗水量	风叶直径	叶片数量	外型尺寸
KT-30	18000m <sup>3</sup> /h	150-200m <sup>2</sup>	35m	200V/50Hz	1100W	50kg	130L	15-20L/H	76cm (30寸)	5	1120*640*1600mm

型号	最大风量	适用面积	电源	功率	重量	加水量	耗水量	噪音	外型尺寸
KT-1E-3N	7200m <sup>3</sup> /H	50-70m <sup>2</sup>	220V/50Hz	290W	35kg	60L	6-8L/H	54/59/64dB	890*490*1400mm
KT-20N	9000m <sup>3</sup> /H	60-80m <sup>2</sup>	220V/50Hz	370W	37kg	55L	6-8L/H	53/58/63dB	870*480*1380mm
KT-24N	12000m <sup>3</sup> /H	800-100m <sup>2</sup>	220V/50Hz	440W	43kg	70L	8-10L/H	56/60/65dB	925*580*1440mm

## 仓储周转 Storage Equipment

### 轻型货架 Light Duty Rack

货架系列结构坚固,安装方便使用灵活,适用于工厂存储各种物品的使用,可满足工厂、仓库、装配线、仓储超市的使用要求,还可以根据客户要求设计、制造以满足不同客户的需求。

Shelves series of sturdy structure, easy to install and flexible use, suitable for factories to store a variety of items to meet the use of factories, warehouses, assembly lines, warehouses and supermarkets, but also according to the customer's requirements for the design and manufacture to meet the needs of different customers.



HJ-1001 轻型货架  
HJ-1001 Light Duty Rack  
1500x500x2000mm



HJ-1002 轻型货架  
HJ-1002 Light Duty Rack  
1500x500x2000mm

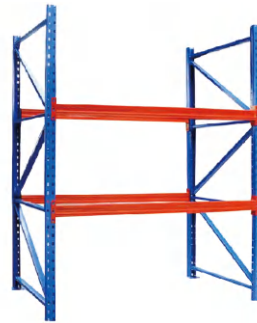


HJ-1003 轻型货架  
HJ-1003 Light Duty Rack  
1500x500x2000mm

### 重型货架 Heavy Duty Racking



HJ-3001 重型货架  
HJ-3001 Heavy Duty Racking



HJ-3002 重型货架  
HJ-3002 Heavy Duty Racking



HJ-3004 重型货架  
HJ-3004 Heavy Duty Racking

### 工位设备 Workstation Equipment

在材质、结构、外型设计上有了进一步的发展,突破了传统的功能局限。以个性化、人性化来体现其与众不同、个性十足的特点。

In terms of material, structure and appearance design, we have made further development, breaking through the traditional functional limitations. It is personalized and humanized to reflect its distinctive and full of personality.



GZT-1004 轻型工作台  
GZT-1004 Lightweight Workbench



GZT-1001 轻型工作台  
GZT-1001 Lightweight Workbench



GZT-1002 轻型工作台  
GZT-1002 Lightweight Workbench



## 仓储周转 Storage Equipment



GZT-2001 重型工作台  
GZT -2001 Heavy Duty Workbench



GZT-2003 重型工作台  
GZT -2003 Heavy Duty Workbench



GZT-2010 重型工作台  
GZT -2010 Heavy Duty Workbench



GZT-3011 流水线工作台  
GZT -3011 Assembly Line Workbench



GZT-3015 重型工作台  
Gzt -3015 Assembly Line Workbench



GZT-3004 重型工作台  
GZT -3004 Assembly Line Workbench

## 物流设备 Logistics Equipment



GJG-4001 储物柜  
GJG-4001 Locker  
1800x1000x600mm



GJG-4004 储物柜  
GJG-4004 Locker  
1800x1000x600mm



GJG-4007 储物柜  
GJG-4007 Locker  
1800x1000x572mm



WL-1003 手推车  
WL-1003 Trolley



WL-1012 三层手推车  
WL-1012 Third-tier Cart



WL-1008 登高车  
WL-1008 High Lift Truck



WL-2001 周转箱  
WL -2001 Crate



WL -2005 仓储笼  
WL -2005 Storage Cage



WL -2007 仓储笼  
WL -2007 Storage Cage



WL-3001 堆垛架  
WL -3001 Stacking Rack



WL-3004 堆垛架  
WL -3004 Stacking Rack



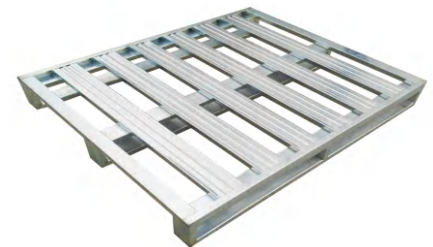
WL-3006 堆垛架  
WL -3006 Stacking Rack



WL-4002 托盘  
WL-4002 Tray



WL -4005 钢托盘  
WL -4005 Steel Pallet



WL -4008 钢托盘  
WL -4008 Steel Pallet

## 自行车停车架 Bicycle Parking Rack

双层车架材质分为：碳钢材质和铝合金材质1.碳钢材质上架采用抽拉下压式，下架采用直进式2.铝合金材质上架采用垂直升降，下架可以左右滑动，可以根据市场需求，下架停车架空置，留给电动车使用。

The double-layer frame material is divided into: carbon steel material and aluminum alloy material. 1. The upper frame of carbon steel material adopts pull-down type, and the lower frame adopts straight-in type. 2. The upper frame of aluminum alloy material adopts vertical lift, and the lower frame can slide left and right. According to market demand, the parking racks can be removed and left vacant for use by electric vehicles.





TYN-01001



TYN-00804  
H:6-10m



TYN-02203  
H:6-8m

LED投射灯 LED Spotlight



外壳材质:优质铝材压铸  
产品尺寸:小150/中190/大250mm  
光源功率:24W/48W/72W

Enclosure Material:  
High-quality aluminum die casting  
Size:Small 150/Medium 190/ Large 250mm  
Lamp Power:24W/48W/72W



外壳材质:优质铝材压铸  
产品尺寸:100\*96\*103mm  
光源功率:6\*2W

Enclosure Material:  
High-quality aluminum die casting  
Size:100\*96\*103mm  
Lamp Power:6\*2W



外壳材质:优质铝材压铸  
产品尺寸:200\*200mm  
光源功率:36W

Enclosure Material:  
High-quality aluminum die casting  
Size:200\*200mm  
Lamp Power:36W

LED抱树灯 LED Tree Hugger Lights



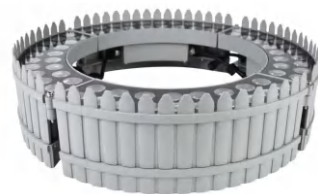
外壳材质:优质铝材压铸  
产品尺寸:60mm/80mm/100mm  
光源功率:10W/20W/30W

Enclosure Material:  
High-quality aluminum die casting  
Size:60mm/80mm/100mm  
Lamp Power:10W/20W/30W



外壳材质:优质铝材压铸  
产品尺寸:130mm/145mm  
光源功率:9W/12W/18W

Enclosure Material:  
High-quality aluminum die casting  
Size:130mm/145mm  
Lamp Power:9W/12W/18W



外壳材质:优质铝材压铸  
产品尺寸:外径400mm内径270mm  
光源功率:72W/18W\*4组

Enclosure Material:  
High-quality aluminum die casting  
Size:Outer diameter 400mm  
Inner diameter 270mm  
Lamp Power:72W/18W\*4 series

LED地埋灯 LED Buried Lights



外壳材质:优质铝材压铸  
产品尺寸:150mm/190mm/250mm  
光源功率:9.2W/18\*2W/24\*2W

Enclosure Material:  
High-quality aluminum die casting  
Size:150mm/190mm/250mm  
Lamp Power:9.2W/18\*2W/24\*2W



外壳材质:优质铝材压铸  
产品尺寸:210mm/235mm/270mm/310mm  
光源功率:18\*2W/24\*2W/36\*2W/60\*2W

Enclosure Material:  
High-quality aluminum die casting  
Size:210mm/235mm/270mm/310mm  
Lamp Power:18\*2W/24\*2W/36\*2W/60\*2W



外壳材质:优质铝材压铸  
产品尺寸:100\*90\*1000\*65mm  
光源功率:12W/18W/24W/36W

Enclosure Material:  
High-quality aluminum die casting  
Size:100\*90\*1000\*65mm  
Lamp Power:12W/18W/24W/36W

## LED洗墙灯 LED Wall Washer



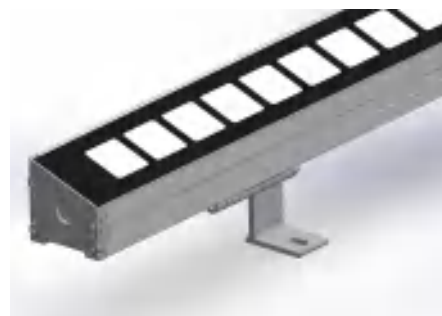
外壳材质:优质铝材压铸  
产品尺寸:36\*36\*1000mm/42\*28\*1000mm  
光源功率:18W/24W/36W

Enclosure Material:  
High-quality aluminum die casting  
Size:36\*36\*1000mm/42\*28\*1000mm  
Lamp Power:18W/24W/36W



外壳材质:优质铝材压铸(双排光源)  
产品尺寸:65\*30\*1000mm  
光源功率:48W/72W

Enclosure Material:  
High-quality aluminum die casting  
(Dual-row light source)  
Size:65\*30\*1000mm  
Lamp Power:48W/72W



外壳材质:优质铝材压铸  
产品尺寸:39\*38\*1000mm  
光源功率:24W/18W

Enclosure Material:  
High-quality aluminum die casting  
Size:39\*38\*1000mm  
Lamp Power:24W/18W

## LED轮廓灯 LED Outline Light



外壳材质:铝合金底座+双层PC盖  
产品尺寸:30\*47\*1000mm  
光源功率:12W/15W

Enclosure Material:  
Aluminum alloy base+Dual-layer PC cover  
Size:30\*47\*1000mm  
Lamp Power:12W/15W



外壳材质:优质铝材-透光玻璃  
产品尺寸:28\*26\*1000mm  
光源功率:12W/15W

Enclosure Material:  
High-quality aluminum alloy  
transparent glass  
Size:28\*26\*1000mm  
Lamp Power:12W/15W



外壳材质:带翅膀加厚铝材+透光PC盖  
产品尺寸:50\*42\*1000mm  
光源功率:12W/15W

Enclosure Material:  
Thickened aluminum alloy  
transparent PC cover  
Size:50\*42\*1000mm  
Lamp Power:12W/15W

LED水底灯 LED Underwater Light



外壳材质:常规水底灯/不锈钢  
产品尺寸:Φ120/145/180/200mm  
光源功率:6W/12W/18W/24W

Enclosure Material:  
Standard underwater light/stainless steel  
Size: Φ120/145/180/200mm  
Lamp Power:6W/12W/18W/24W



外壳材质:优质铝材压铸  
产品尺寸:Φ90mm  
光源功率:12W/15W

Enclosure Material:  
High-quality aluminum die casting  
Size: Φ90mm  
Lamp Power:12W/15W



外壳材质:优质铝材压铸  
产品尺寸:Φ42/52/62mm  
光源功率:1W/3W/6W(3珠)

Enclosure Material:  
High-quality aluminum die casting  
Size: Φ42/52/62mm  
Lamp Power:1W/3W/6W(3)

LED壁灯 LED Wall Lamp



外壳材质:优质铝材压铸  
产品尺寸:90mm/110mm/145mm  
光源功率:6W/24W/36W

Enclosure Material:  
High-quality aluminum die casting  
Size:90mm/110mm/145mm  
Lamp Power:6W/24W/36W



外壳材质:优质铝材压铸  
产品尺寸:90mm/110mm/145mm  
光源功率:12W/15W

Enclosure Material:  
High-quality aluminum die casting  
Size:90mm/110mm/145mm  
Lamp Power:12W/15W



外壳材质:优质铝材压铸  
产品尺寸:65\*65mm  
光源功率:12W/15W

Enclosure Material:  
High-quality aluminum die casting  
Size:65\*65mm  
Lamp Power:12W/15W

LED草坪灯 LED Lawn Lamp



外壳材质:优质铝材压铸  
产品尺寸:方110\*110\*600mm  
光源功率:15W

Enclosure Material:  
High-quality aluminum die casting  
Size:110\*110\*600mm  
Lamp Power:15W



外壳材质:优质铝材压铸  
产品尺寸:中150mm/Φ180MM高600mm  
光源功率:20W

Enclosure Material:  
High-quality aluminum die casting  
Size:150mm/Φ180mm h600mm  
Lamp Power:12w/15w



外壳材质:优质铝材压铸  
产品尺寸:50\*50\*600mm  
光源功率:15W

Enclosure Material:  
High-quality aluminum die casting  
Size:65\*65mm  
Lamp Power:15W

LED球场灯 LED Court Light



外壳材质:优质铝材压铸  
产品尺寸:340\*236\*220mm  
光源功率:100W/200W/300W

Enclosure Material:  
High-quality aluminum die casting  
Size:340\*236\*220mm  
Lamp Power:100W/200W/300W



外壳材质:优质铝材压铸  
产品尺寸:36 \*36 \*32mm  
光源功率:300W/400W/600W

Enclosure Material:  
High-quality aluminum die casting  
Size:36 \*36 \*32mm  
Lamp Power:300W/400W/600W



外壳材质:优质铝材压铸  
产品尺寸:650\*260\*95mm  
光源功率:90W/100W

Enclosure Material:  
High-quality aluminum die casting  
Size:650\*260\*95mm  
Lamp Power:90W/100W

## 礼堂椅 Auditorium Chair

### 塑壳 Plastic Backshell



L02 常规塑壳  
L02 Regular Plastic Backshell



L05 豪华塑壳  
L05 Deluxe Plastic Backshell



L06 勾头款塑壳  
L06 Hook Type Plastic Backshell

### 木板 Wooden



L01 常规木板  
L01 Regular Wooden



L03 木板  
L03 Wooden



L10 木板双截背  
L10 Wooden-double-ended Back

### 铝合金 Aluminum Alloy



L02 铝合金款  
L02 Aluminum Alloy Type



L03 铝合金款  
L03 Aluminum Alloy Type



L07 铝合金款  
L07 Aluminum Alloy Type



# 浮筒 Floats

## 浮筒 Floats



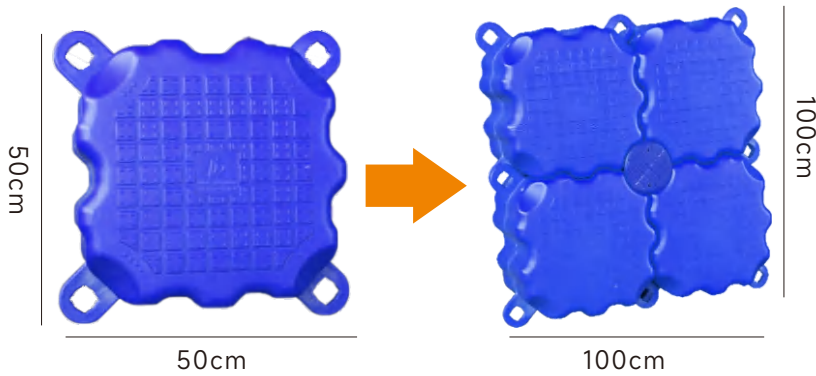
50\*50\*40cm



50\*50\*35cm



100\*50\*40cm



四个独立浮=1m<sup>2</sup>  
Four Individual Pontoons=1m<sup>2</sup>



- 1. 1.5米栏杆 Baluster
- 2. 1.2米栏杆 Baluster
- 3. 不锈钢船栓 Ship Spigot
- 4. 蘑菇头 Short Pin
- 5. 双层长蘑菇头 Long Pin
- 6. 凹槽插销 Grooved Latch
- 7. 系船栓 Bollard
- 8. 环形螺丝 Ring Screw
- 9. 平头螺丝 Connecting Scre
- 10. 抱桩器 Pile Holder
- 11. 防撞条 Bumper Strip

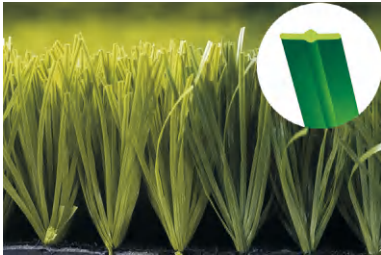


# 人造草坪 Artificial Lawn

## 人造草坪 Artificial Lawn

原材料我们采取进口、国产两大采购和生产系统, 拥有多年自主拉丝经验。研发团队正不断设计出各类草丝产品, 满足不同国家和地区客户需求; 草丝形状、草丝材质、划线类型等都在推出新品种; 在技术团队的管控下, 各项指标表现稳定, 且不断地提高。

We adopt import and domestic procurement and production systems for raw materials, and have many years of independent wire and drawing experience. The R&D team is constantly designing various kinds of straw silk products to meet the needs of customers in different countries and regions; new varieties of straw silk are being introduced in shape, material and marking type; under the control of the technical team, the performance of various indicators is stable and constantly improving.



- 型号 Model: YDC-16
- 密度 Density: 10500±5%
- 颜色 Color: 翠绿 + 果绿
- 纤度 Dtex: 8800
- 高度 Pile height: 50mm±2mm
- 行距 Gauge: 5/8



- 型号 Model: YDC-05B
- 密度 Density: 16800
- 颜色 Color: 翠绿 + 果绿
- 纤度 Dtex: 10500
- 高度 Pile height: 50mm±2mm
- 行距 Gauge: 3/4



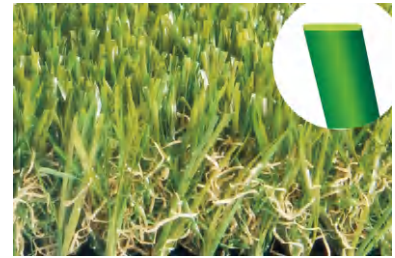
- 型号 Model: YDC-01S
- 密度 Density: 10500±5%
- 颜色 Color: 翠绿 + 果绿
- 纤度 Dtex: 10000
- 高度 Pile height: 50mm±2mm
- 行距 Gauge: 3/4



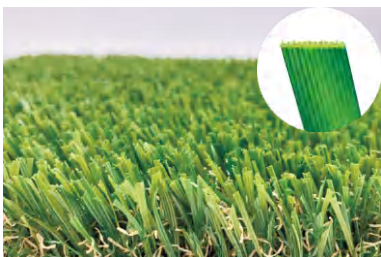
- 型号 Model: XXC-11
- 密度 Density: 16800
- 颜色 Color: 混色
- 纤度 Dtex: 10000
- 高度 Pile height: 25mm±2mm
- 行距 Gauge: 3/8



- 型号 Model: XXC-06S
- 密度 Density: 18900
- 颜色 Color: 翠绿 + 果绿
- 纤度 Dtex: 15000
- 高度 Pile height: 50mm±2mm
- 行距 Gauge: 3/8



- 型号 Model: XXC-04P
- 密度 Density: 16800
- 颜色 Color: 混色
- 纤度 Dtex: 10000
- 高度 Pile height: 30mm±2mm
- 行距 Gauge: 3/8



- 型号 Model: XXC-06W
- 密度 Density: 16800
- 颜色 Color: 混色
- 纤度 Dtex: 10000
- 高度 Pile height: 30mm±2mm
- 行距 Gauge: 3/8



- 型号 Model: YRYC-01T
- 密度 Density: 14700
- 颜色 Color: 图案
- 纤度 Dtex: 11000
- 高度 Pile height: 25mm±2mm
- 行距 Gauge: 3/8



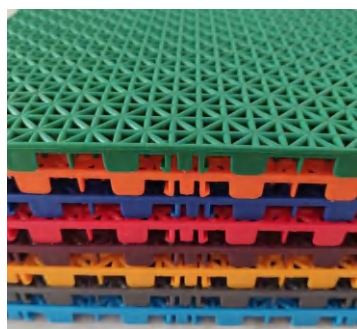
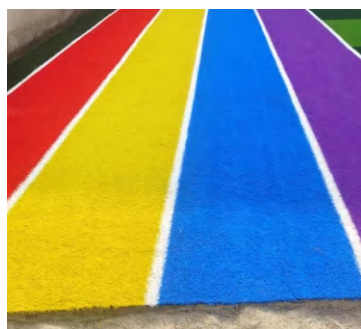
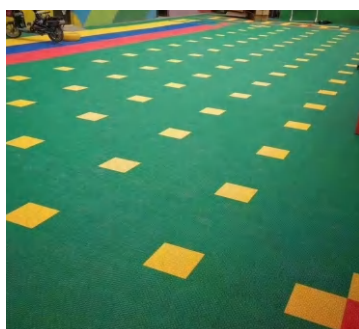
- 型号 Model: 彩色跑道
- 密度 Density: 15750
- 颜色 Color: 红黄蓝紫
- 纤度 Dtex: 11000
- 高度 Pile height: 25mm±2mm
- 行距 Gauge: 3/8

# 悬浮地板 Drainage Mat

悬浮地板 Drainage Mat



产品尺寸:305\*305\*15.5mm  
Product Size:305\*305\*15.5mm



# 防洪板 Flood control barrier

- 1** Aluminum alloy material -anti-corosion and wearresistant, durable.

The height of a single piece of aluminum alloy water baffle is 200mm, which can be customized according to customer needs, and the length of the water baffle can be customized according to customer requirements. According to the width of the door, the width of the wall on both sides of the door is measured, and the accuracy error is  $\pm 3\text{mm}$ .

- 2** Thickened column -concave and convex design, close connection.



- 3** Warning label -black and yellow reflective, eye-catching tips.



- 4** Uniformed cover platen- cohesive and durable.



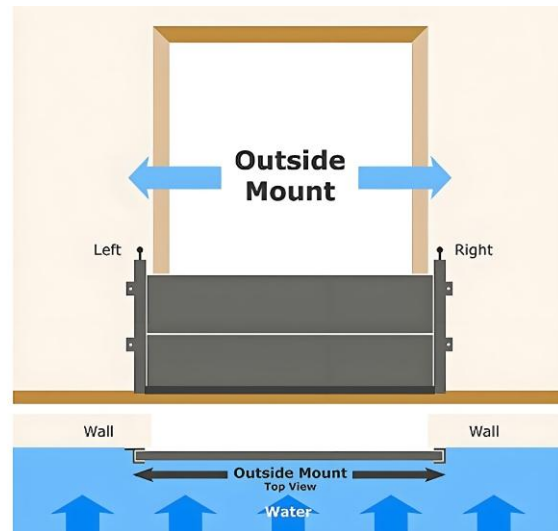
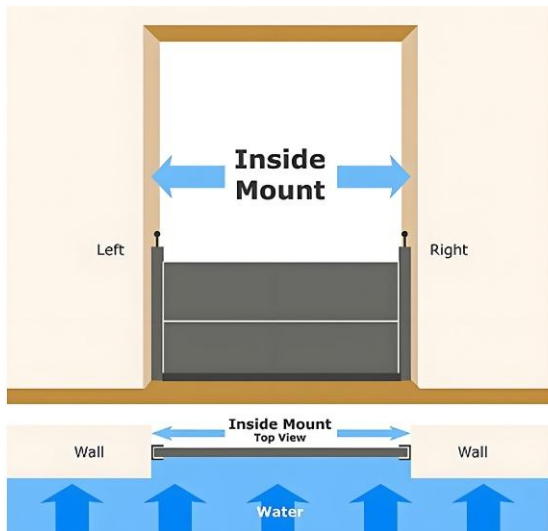
- 5** Sheet width -customizable size overlay.



- 6** Thickened waterproof rubber strip -tight waterproof.



## Flood Barrier Mounting Options for Door



## Flood Barrier Mounting Options for Bank



With Support



No Support