



Buoy Product Description 03

Basic information 03

Specification 04

Accessories Introduction 05

Product Characteristics 06

Product Display 07

Calculation Mode 08

Loading calculation 08

Freight calculation 08

Quantity squared calculation 08

Application 09



www.yiindustrial.com

Ningbo Yiyi Network Technology Group Co., Ltd

01 Buoy Product Description

Basic information

Specification

Mounting splice

02 Accessories Introduction

Basic parameter

Effect

03 Product Characteristics

Product material

Mode of production

Maintain

Product assembly

04 Product Display

Basic parameter

Effect

05 Calculation Mode

Loading calculation

Freight calculation

Quantity squared

calculation

06 Application

Application scenario

Case presentation

BASIC INFORMATION >>



High Density Polyethylene(HDPE)

The float is made of high density polyethylene (HDPE) as the main raw material, and the content is ≥95%. It has good toughness and strong load-bearing capacity.

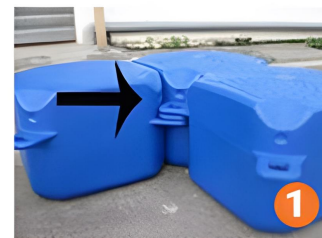


Blow molding process

The production of float is processed by blow molding process; Moreover, it can be designed according to actual needs such as site use or engineering requirements, and the production process is simple and convenient. Supports large volume ordering.

www.yiyindustrial.com
Ningbo Yiyi Network Technology Group Co., Ltd

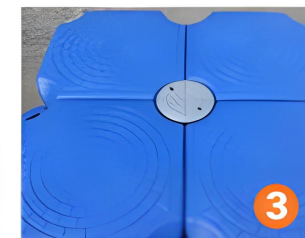
SPLICING MODE >>



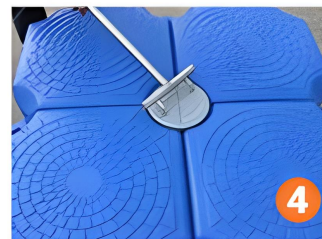
Double four earrings



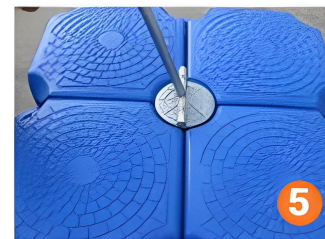
Complete assembly



Insert connecting pin



Rotating wrench



Rotate counterclockwise by 45°

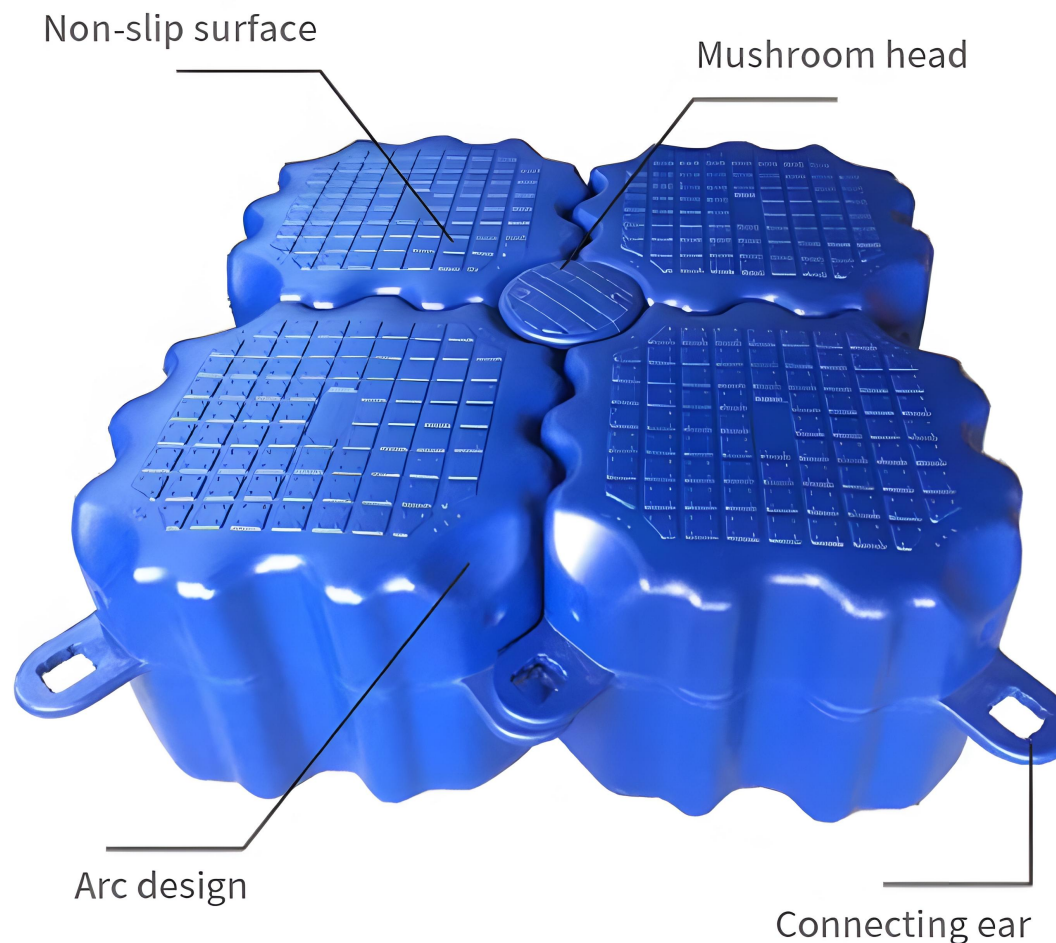


Complete

Specification	Support customization	Color	Blue / Orange (customizable)
Material	Polymeric polyethylene	Weight	7KG
Application	Floating bridge, floating platform, marina, wading sports, fishing activities		

BUOY SPECIFICATION >>

Model A	500*500*400	4 / m ²	6.5 kg / piece
Model B	500*500*300	4 / m ²	5.8 kg / piece
Model C	1000*500*400	2 / m ²	12 kg / piece
Model D	1000*1000*400		18.5 kg / piece



BUOY SPECIFICATION >>



Boat peg



Banister



Large mushroom head



Mushroom head



Flat head screw



Bumper strip

Boat peg

Size : 40*30*19cm **Weight :** about 1.3kg

Installed between four pontoons, similar to the mushroom head, used to hold the boat support.

Banister

Size : 120*12*12cm **Weight :** about 2 kg

It can be installed in the middle of 4 pontoons, and can also be installed in the middle of the pontoon and anti-collision strip to prevent pedestrians from falling into the water.

Mushroom head

Size : 11*11*19cm **Weight :** about 0.2kg

It is commonly used to connect 4 buoy ears between inserts and to fix the links between the buoy and the buoy.

Flat head screw

Size : 7.5*7.5*14cm **Weight :** about 0.2kg

Connect the two ears at the outermost intersection of the buoy to secure the separation between the buoy and the buoy

Bumper strip

Size : 9.5*9.5*20cm **Weight :** about 0.19kg

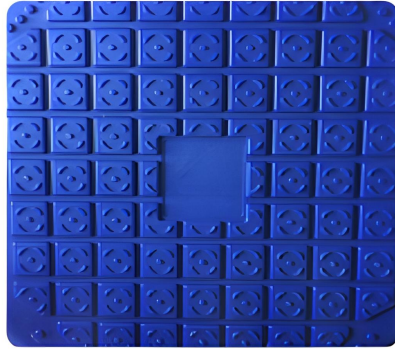
It is installed at the outermost of the buoy to prevent collision, protect the buoy and reduce damage.

BUOY SPECIFICATION >>



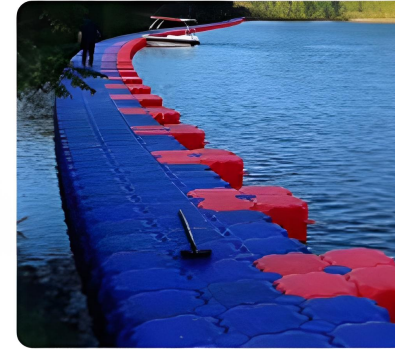
Careful selection

Made of synthetic material HMWHDPE (high molecular polyethylene), the environment is pollution-free.



Anti-slip

The surface anti-slip pattern design can avoid the common dangers of cement, wood and iron facilities.



Diverse shapes

Diverse modeling, the whole module structure, can meet the needs of the landscape, quickly change the platform modeling



Strong bearing capacity

It has high bearing capacity, stable simplified, good impact resistance, and can work normally at -60°C~80°C.



Easy to install

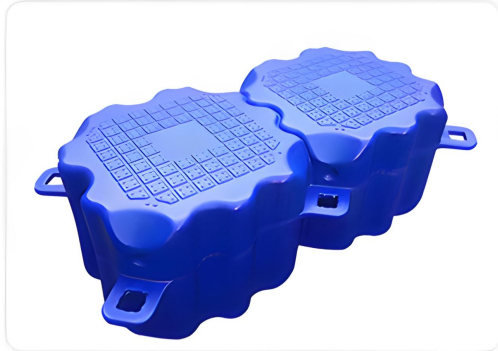
Assembly is simple, fast, flexible and diverse, the whole adopts module structure.



Complete accessories

Complete supporting equipment, can berth various sizes of vessels, can rise and fall automatically with the water level.

Double Floating Dock Cube



Plastic Dock Decking



Jet Ski Plastic Dock



Plastic Drive on Boat Dock



Freight calculation method

In the city	Cargo drag	Attention
Due to the different models and sizes of vehicles, the loading quantity is different Please consult us for the specific shipment quantity		
Outside the city (Also refer to the Yun Full platform)		
4.2 m truck	7 yuan / km within 50 km, 5 yuan / km within 200 km, and 4 yuan / km above 300 km	
6.8 m truck	8 / km within 50 km, RMB 7 / km within 100 km, RMB 6 / km within 200 km, and RMB 5.5 / km above 300 km	
9.6 m truck	10 yuan / km within 50 km, 9 yuan / km within 100 km, 8 yuan / km within 200 km, and 7 yuan / km above 300 km	
13 m truck	11 yuan / km within 200 km, 10 yuan / km within 300 km, 9 yuan / km within 400 km, and 8 yuan / km above 500 km	

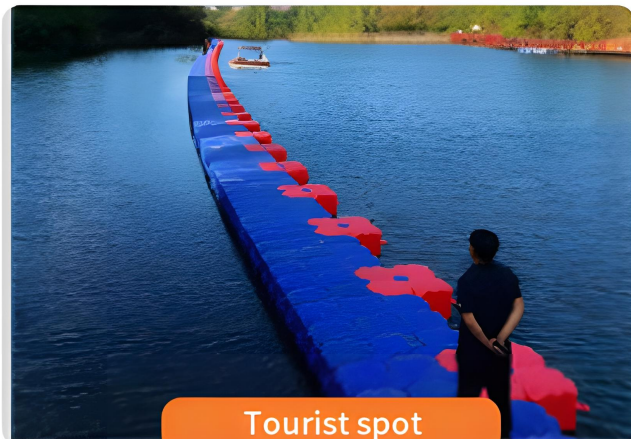
Buoy number square calculation method

Buoy number square calculation method	Length * Width
The calculation method of accessories	
Mushroom nail	$(\text{side length} - 1) * (\text{side length} - 1)$
Screw resistance	$\{ (\text{side length} - 1) + (\text{side length} - 1) \} * 2$

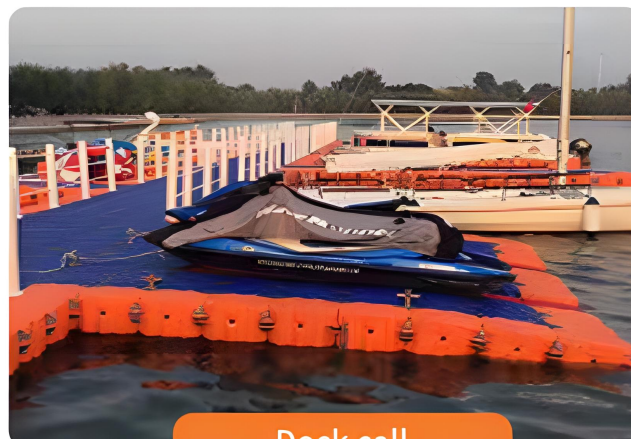
* The side length is the number of barrels

Float loading capacity

4.2 m private car	42 m ² buoy (with regular accessories)
6.8 m private car	95 m ² buoy (with regular accessories)
9.6 m private car	126 m ² buoy (with regular accessories)
13 m private car	160 m ² buoy (with regular accessories)
17.5 m private car	370 m ² buoy (with regular accessories)



Tourist spot



Dock call



Aquaculture



Pontoon



Water park



Floating house

